

STEP INTO A WORLD THAT'S  
TRULY ENDLESS.



ACTUAL YAMUNA VIEW FROM LOCATION.

PRESENTING PREMIUM 3 & 5 BHK HOMES, BY ATS HOMEKRAFT.



**PIOUS  
ORCHARDS**

**SECTOR 150, NOIDA**



# ENDLESS IS EVERYTHING.

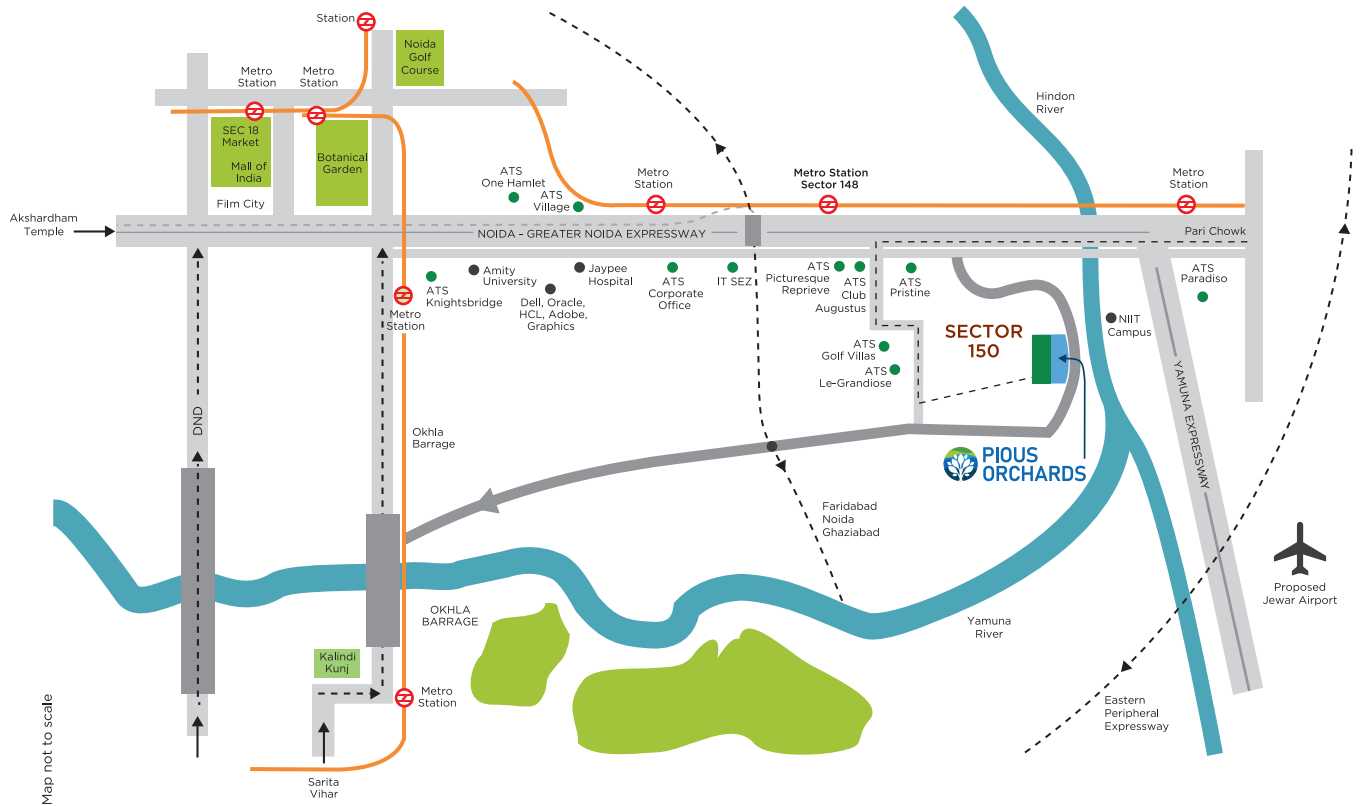
Everlasting joy. Boundless serenity. Infinite abundance. Wouldn't it be wonderful if everything in life was endless? If we could spend countless hours of quality time with our loved ones, surrounded by lush, limitless beauty? This is the world we've created, at Pious Orchards.

Overlooking the stunning Yamuna, enveloped in 9.3 acres of rich, abundant greenery and verdant orchards, our premium 3 and 5 BHK homes, just two on each floor - offer unlimited peace and privacy.

Add to this our state-of-the-art amenities, and you'll be opening your doors to immeasurable ease and enjoyment.

Come, enter a world where everything is endless, and endless is everything.

# ENDLESS JOY GETS AN UNBEATABLE LOCATION.



- It is one of the greenest sectors of Noida • Shaheed Bhagat Singh Park, spread over 40 acres, one of the biggest in Noida, is at a walking distance
- The low density of this sector means more open spaces per family • Easily accessible location through 6-lane Noida - Greater Noida expressway
- Easy connectivity to rest of the NCR via Noida - Greater Noida metro

## ENDLESS OPTIONS TO EXPLORE LIFE, AROUND YOUR NEW HOME.



### SCHOOL

- DPS Noida
- JBM International School
- Shiv Nadar School
- Pathways School
- The Shriram Millennium School
- Lotus Valley School
- Genesis Global School



### UNIVERSITY

- Amity University
- Gautam Buddha University
- Sharda University
- Noida International University
- BIMTECH, Knowledge Park



### MULTIPLEX

- PVR Mall of India
- PVR Superplex, Logix City Center Mall
- Carnival Cinemas, Great India Place
- Inox, Connaught Place Mall
- Cinepolis, Grand Venice Mall
- Movie Mime, Omaxe NRI Mall



### SHOPPING

- Mall of India
- Logix City Center Mall
- Great India Place Mall
- Gardens Galleria
- Grand Venice Mall
- ATS Kinghood Drive (upcoming)



### HOSPITAL

- Yatharth Super Speciality Hospital
- Kailash Hospital
- Jaypee Hospital
- Felix Hospital



### METRO CONNECTIVITY

- Metro Station, Sector 148



# ENDLESS WAYS TO ENJOY LIFE'S PLEASURES.

Thoughtfully designed, Pious Orchards gives you unlimited options for entertainment. So enjoy life's infinite joys, with these special amenities, unique to the complex.







REFLEXOLOGY PATH



FOREST TRAIL



AROMATIC GARDEN



YOGA GARDEN



HERBS GARDEN

With over 30 such amenities to choose from, residents can experience a life of unparalleled comfort and convenience.



# ENDLESS SPACE FOR LIFE'S JOYS.

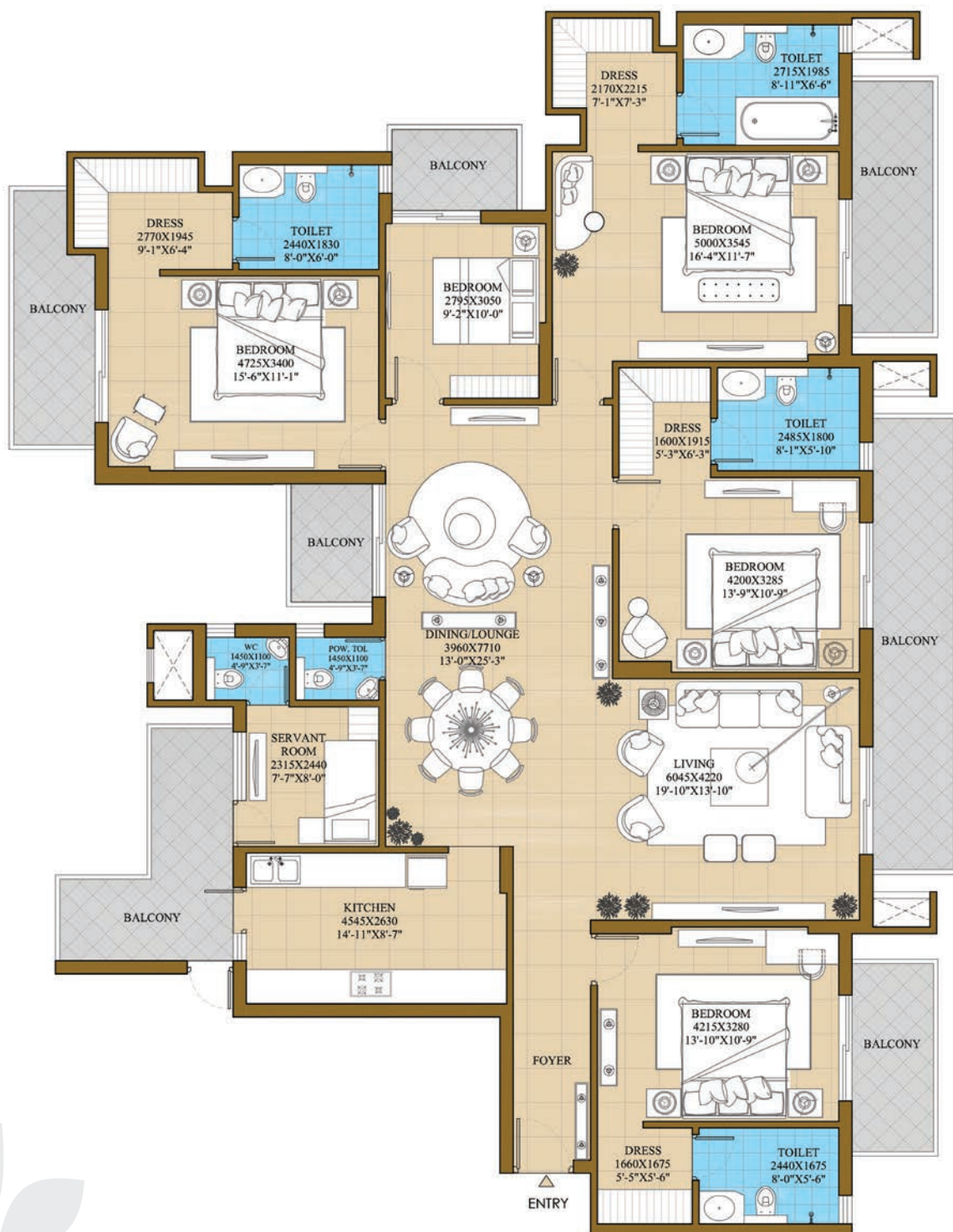


## LEGENDS

1. Clubhouse with Community Hall, Squash Court, Well-equipped Gym, Indoor Sports Room
2. Swimming Pool with Changing Rooms
3. Kids Pool
4. Jacuzzi
5. Pool Loungers
6. Cabana
7. Open Amphitheatre in Landscape
8. Lawn
9. Reflexology Path
10. Aromatic Garden
11. Yoga Lawn
12. Fitness Court
13. Kids Play Area
14. Sand Pit
15. Skating Rink
16. Climbing Wall
17. Cricket Practice Pitch
18. Badminton Court
19. Tennis/Futsal Court
20. Basketball/Volleyball Court
21. Herbs Garden
22. Orchard
23. Forest Trail
24. Pavilion
25. Sculpture court
26. Tree Plaza
27. Hedge Maze
28. Cocoon reading
29. Pet Park
30. Convenient Stores

# ENDLESS ROOM FOR LIFE'S SPECIAL MOMENTS.

## TYPICAL UNIT PLAN - TYPE A



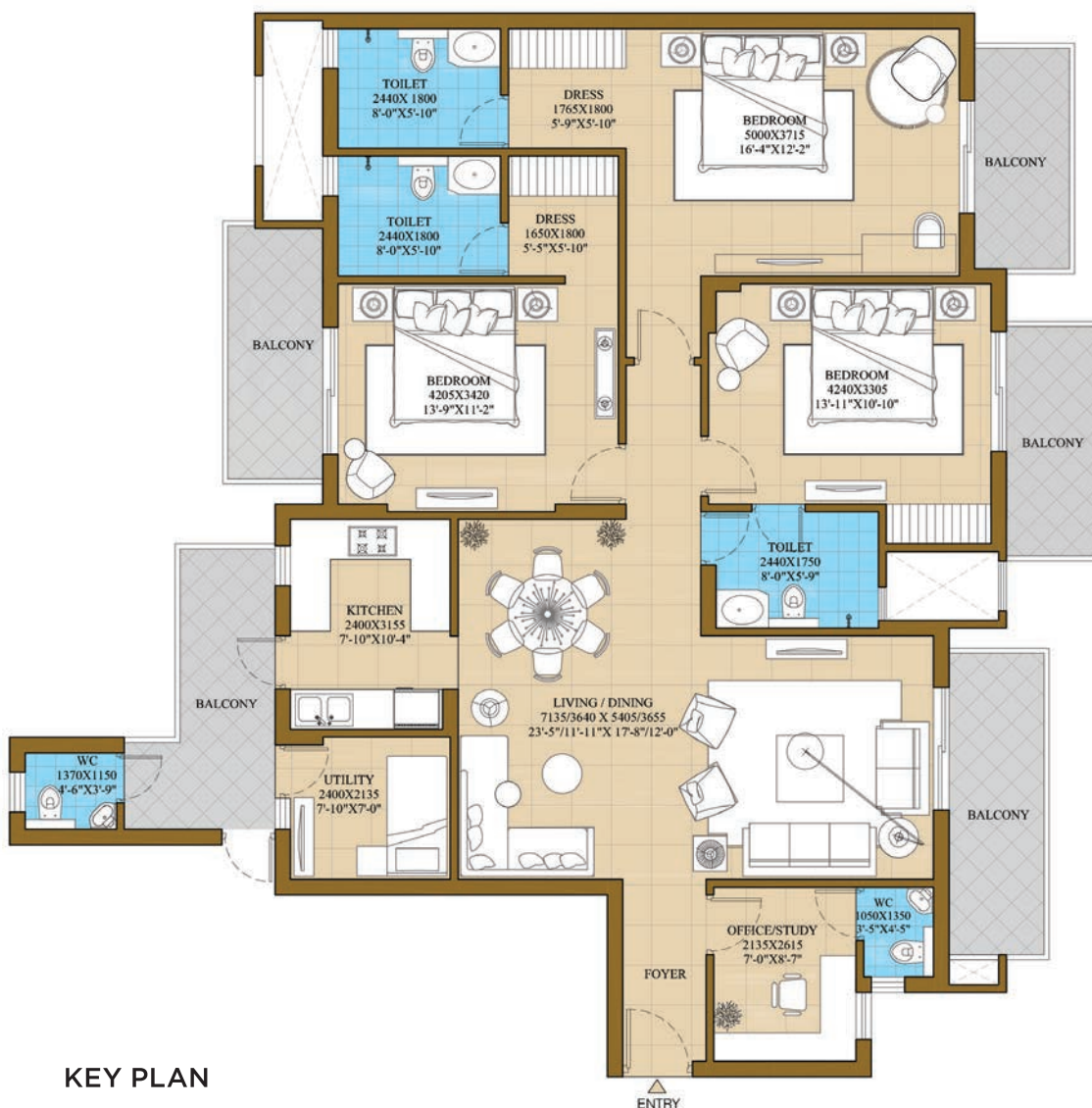
### KEY PLAN

**Saleable Area:** 297.29 Sq. M.  
 252.69 Sq. M. (Built-up Area) + 44.60 Sq. M.  
 (Common Circulation + Services)  
**Carpet Area:** 189.52 Sq. M.  
**Balcony Area:** 45.52 Sq. M.

**Saleable Area:** 3200 Sq. Ft.  
 2720 Sq. Ft. (Built-up Area) + 480 Sq. Ft.  
 (Common Circulation + Services)  
**Carpet Area:** 2040 Sq. Ft.  
**Balcony Area:** 490 Sq. Ft.



## TYPICAL UNIT PLAN - TYPE B



### KEY PLAN

**Saleable Area:** 218.32 Sq. M.  
177.81 Sq. M. (Built-up Area) + 40.51 Sq. M.  
(Common Circulation + Services)  
**Carpet Area:** 132.85 Sq. M.  
**Balcony Area:** 30.65 Sq. M.

**Saleable Area:** 2350 Sq. Ft.  
1914 Sq. Ft. (Built-up Area) + 436 Sq. Ft.  
(Common Circulation + Services)  
**Carpet Area:** 1430 Sq. Ft.  
**Balcony Area:** 330 Sq. Ft.

#### Note:

1. The Window size/its location may change because of elevation features.
2. Overall layout may vary because of statutory reasons in case required.
3. Column location and size may vary as per structural changes as per the requirement.
4. Company/Architect reserves right to add/delete any details/specifications/elevations mentioned as is required by Company and Authorities.
5. Saleable area is tentative and is subject to change due to modifications asked for by approving authorities from time to time till occupancy certificate is obtained. Architect reserves the right to add/delete any details/specifications/elevations mentioned.
6. The given measurements are brick to brick dimensions where the thickness of finishes are not considered.

# 1sq.m. = 10.764 Sq. Ft.

**For enquiry, call: 8892 150 150**



Homekraft Infra Pvt. Ltd. (CIN U70200DL2017PTC314287)

**Site Office:** Plot No. SC-02/J&K, Sector 150, Noida.

**Corporate Office:** ATS Tower, Plot No. 16, Sector 135, Noida. Tel: 0120-7111500

Follow us on: /HomekraftInfra | [www.homekraft.in](http://www.homekraft.in)

In Association with



Member:

**Disclaimer:** This document was printed in October 2021. The information contained in this communication is purely conceptual and not a legal offering. All images used are stock images and artistic conceptualization for illustration purpose only and do not purport to exactly replicate the products. Any furniture & fixtures shown here are not part of the offering & are purely for showcasing possibilities. RERA Reg. No. UPRERAPRJ183246, [www.up-rera.in](http://www.up-rera.in) \*T&C apply.